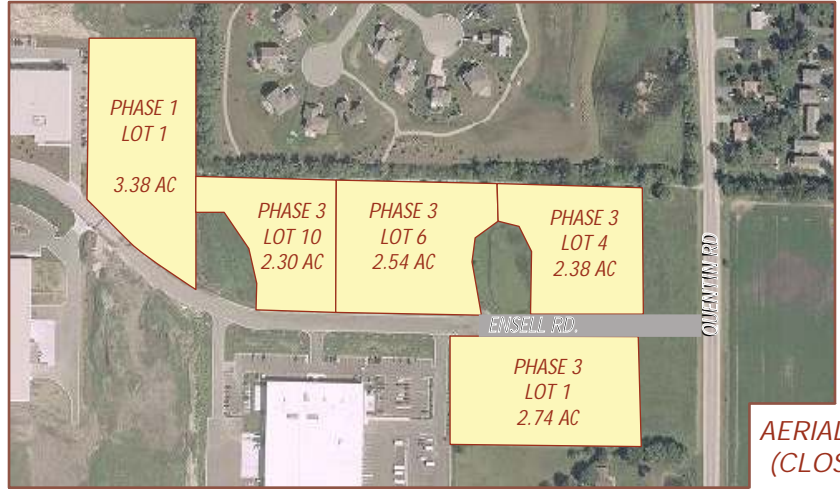
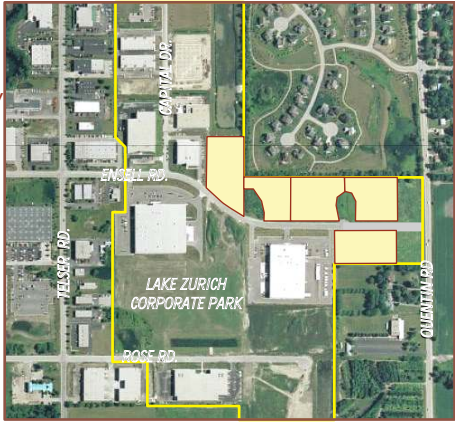


**THE
TIDEMAN
COMPANY**

245 Waukegan Rd. Suite 220
Northfield, IL 60093
847.441.5010
Fax: 847.441.5109

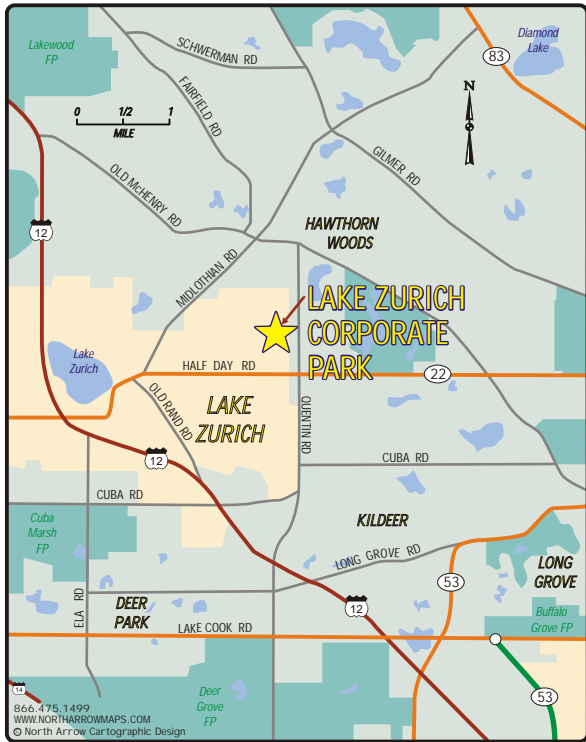
**SALE - LAKE ZURICH CORPORATE PARK, LAKE ZURICH, IL
"LAKE COUNTY'S BEST KEPT SECRET"**

AERIAL VIEW
(OVERALL)



AERIAL VIEW
(CLOSE UP)

M A P



Lake Zurich Corporate Park is the ideal business location in the northwest suburbs for your distribution or light manufacturing facility. Attractive development standards are combined with location, labor availability and Lake County taxes at a land price that is very affordable.

D E T A I L S

Location	1/4 mile north of Half Day Rd. (Rte. 22) extending from Quentin Rd. on the east to the existing Lake Zurich Industrial Center on the west.
Lot Sizes	2.3 - 4.8 Acres (may divide as small as one acre)
Zoning	I-1, = Limited Industrial in Lake Zurich

Lot Details	LOT	ACRES	SF	PRICE	PRICE/SF
PHASE 1	1	3.38	147,039	\$661,673	\$4.50
PHASE 2	10	2.30	100,356	\$501,782	\$5.00
PHASE 3	1	2.74	119,542	\$657,479	\$5.50
	4	2.38	103,687	\$570,278	\$5.50
	6	2.54	110,790	\$553,949	\$5.00

**FOR MORE INFORMATION, CALL
JEFF TIDEMAN: 1.847.441.5010
j.tideman@tidemanco.com**